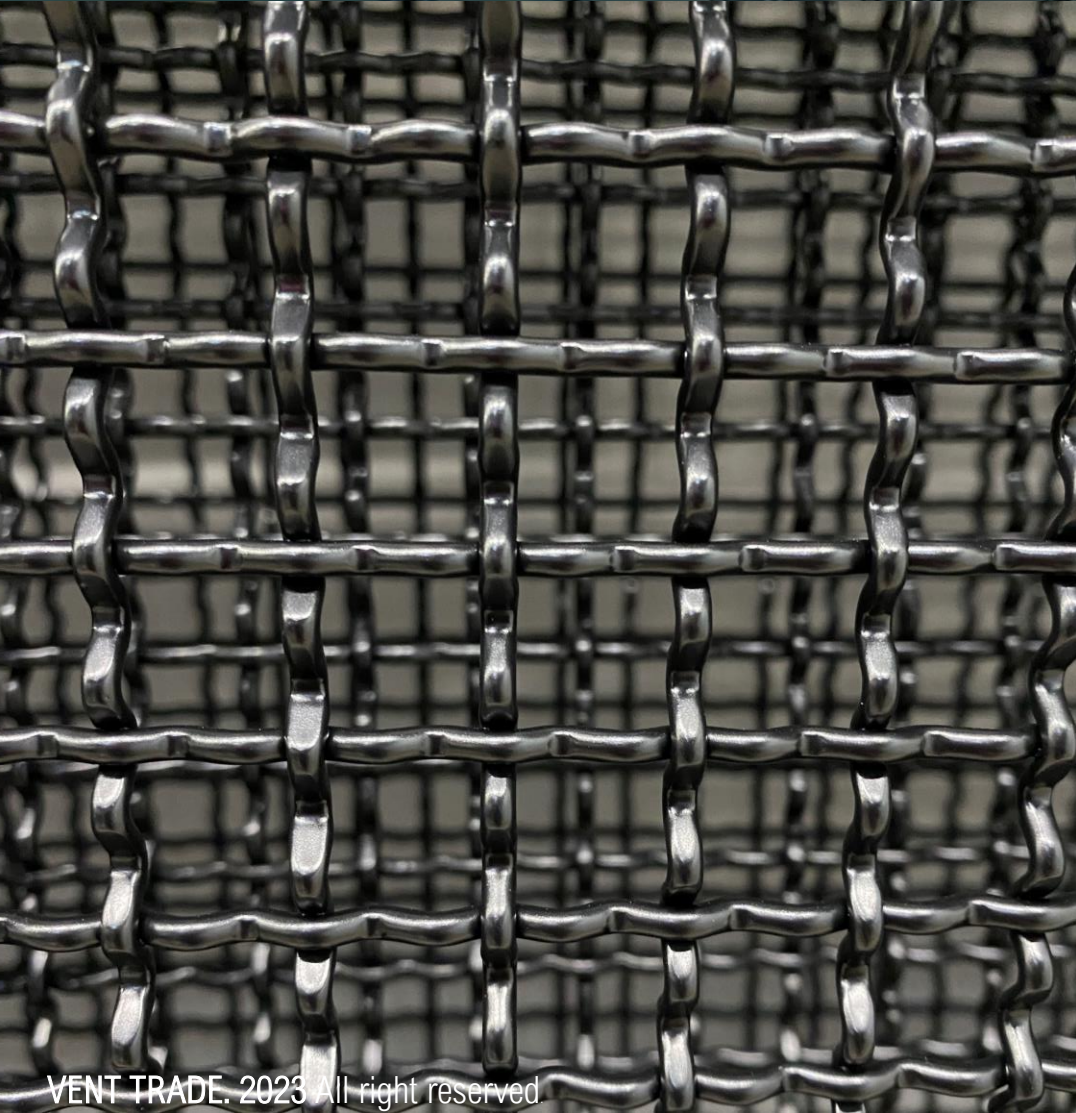


LET US
DO IT
FOR YOU!

From Design to Installation | 2023

Safety Mesh for Data Centers |



Safety Meshes are a product used in data centers that allows for the restriction of access to areas where servers and data are kept, preventing potential data theft. Due to this they need to meet rigorous requirements.

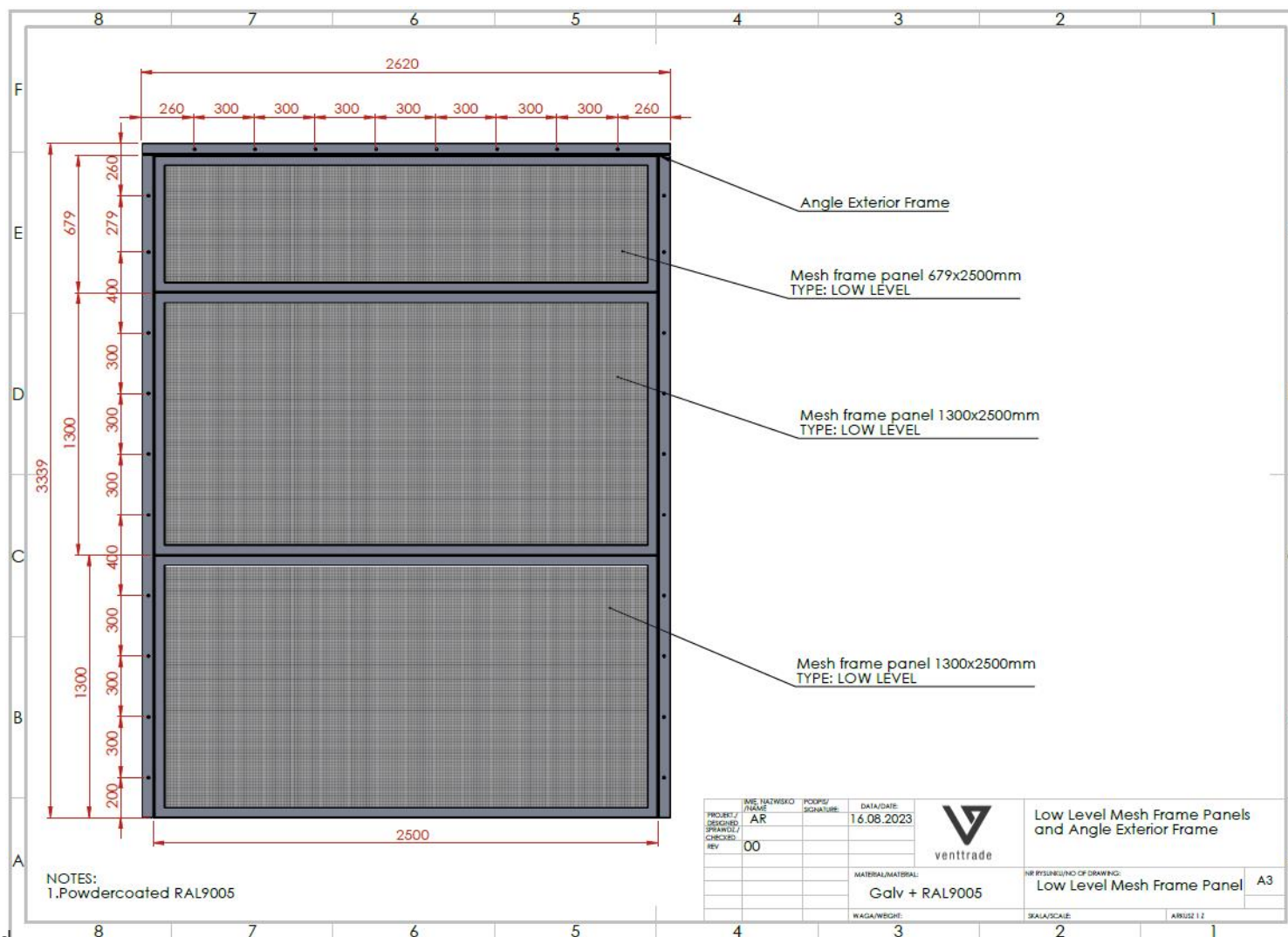
Their construction allows for easy cleaning and proper finishing improves the aesthetic/visual values.

We'd like to take you through the entire production proces.

LET US
DO IT
FOR YOU!

From Design to Installation | 2023

Safety Mesh for Data Centers |



The design of the
Mesh Panel prepared
by our designers in
SolidWorks.



LET US
DO IT
FOR YOU!

From Design to Installation | 2023

Safety Mesh for Data Centers |



The first stage of production is the preparation, cutting and assembly of all the element, which are then welded.

These meshes were welded in our workshop in Szczecin, Poland.



LET US
DO IT
FOR YOU!

From Design to Installation | 2023

Safety Mesh for Data Centers |



Next, the elements are galvanized.

This process allows for protection against corrosion.



LET US
DO IT
FOR YOU!

From Design to Installation | 2023

Safety Mesh for Data Centers |



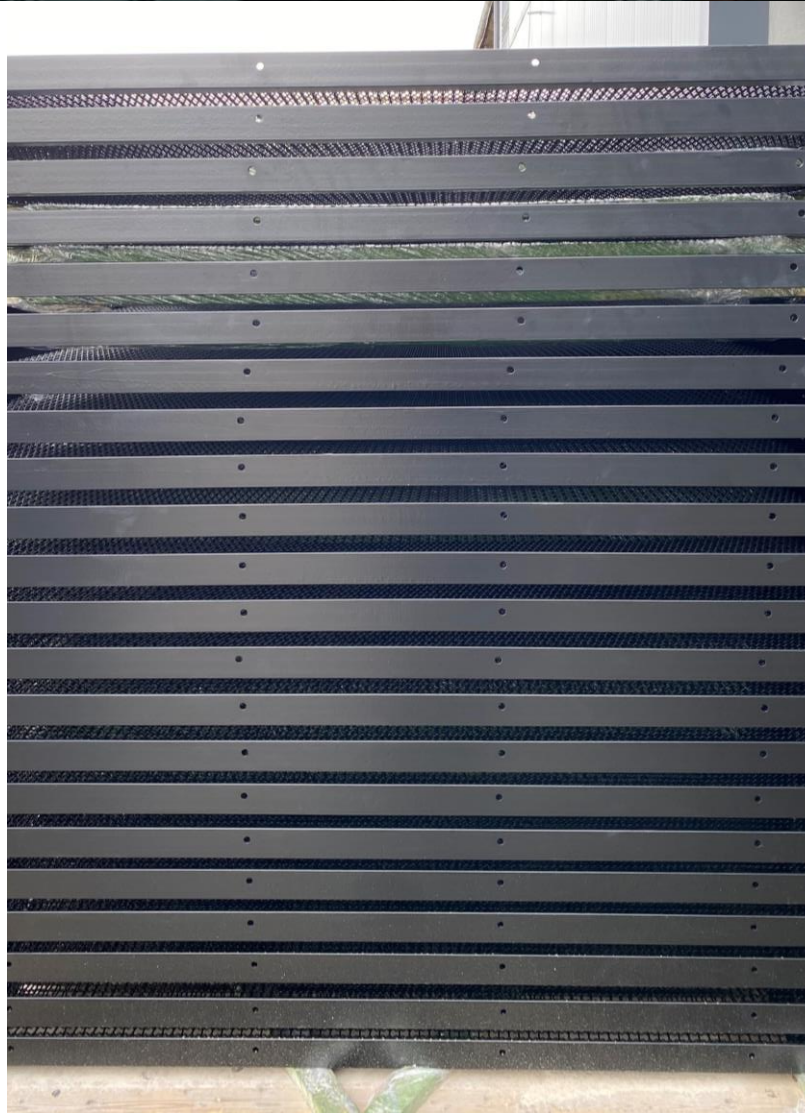
The final stage before assembly is powder painting, which results in a better looking and more resilient product.



LET US
DO IT
FOR YOU!

From Design to Installation | 2023

Safety Mesh for Data Centers |



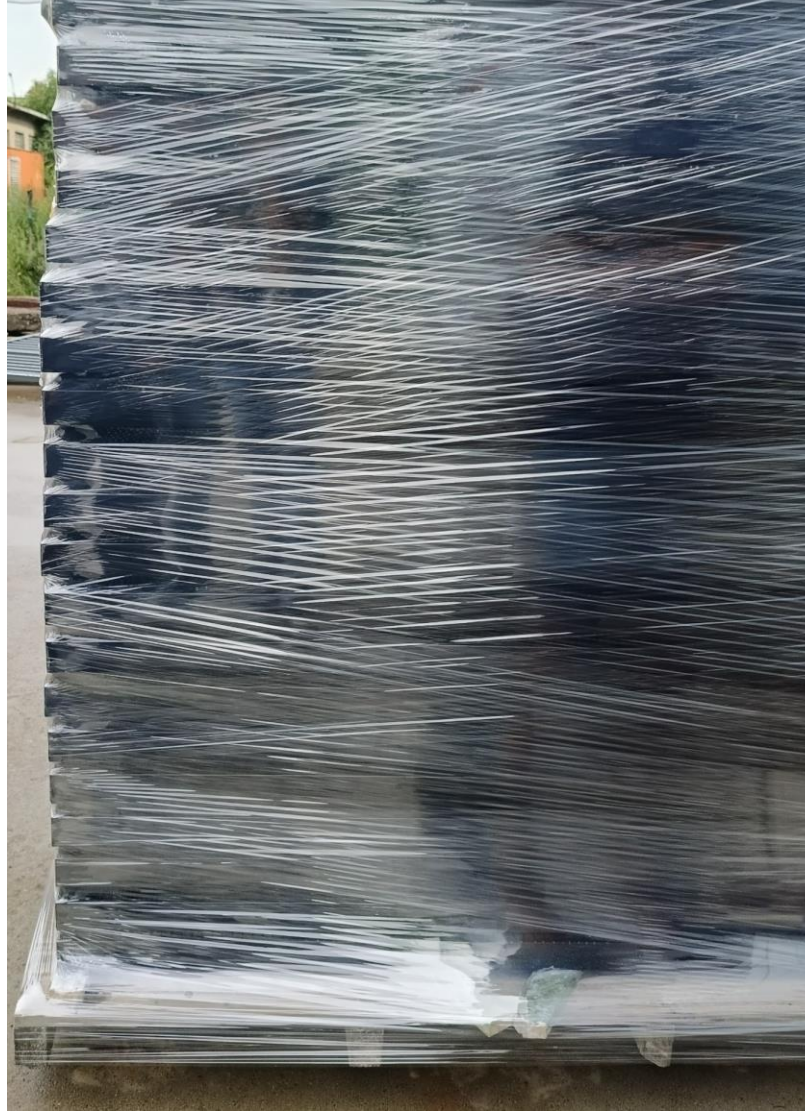
Here are the Mesh Panels
before and after powder
painting.



LET US
DO IT
FOR YOU!

From Design to Installation | 2023

Safety Mesh for Data Centers |

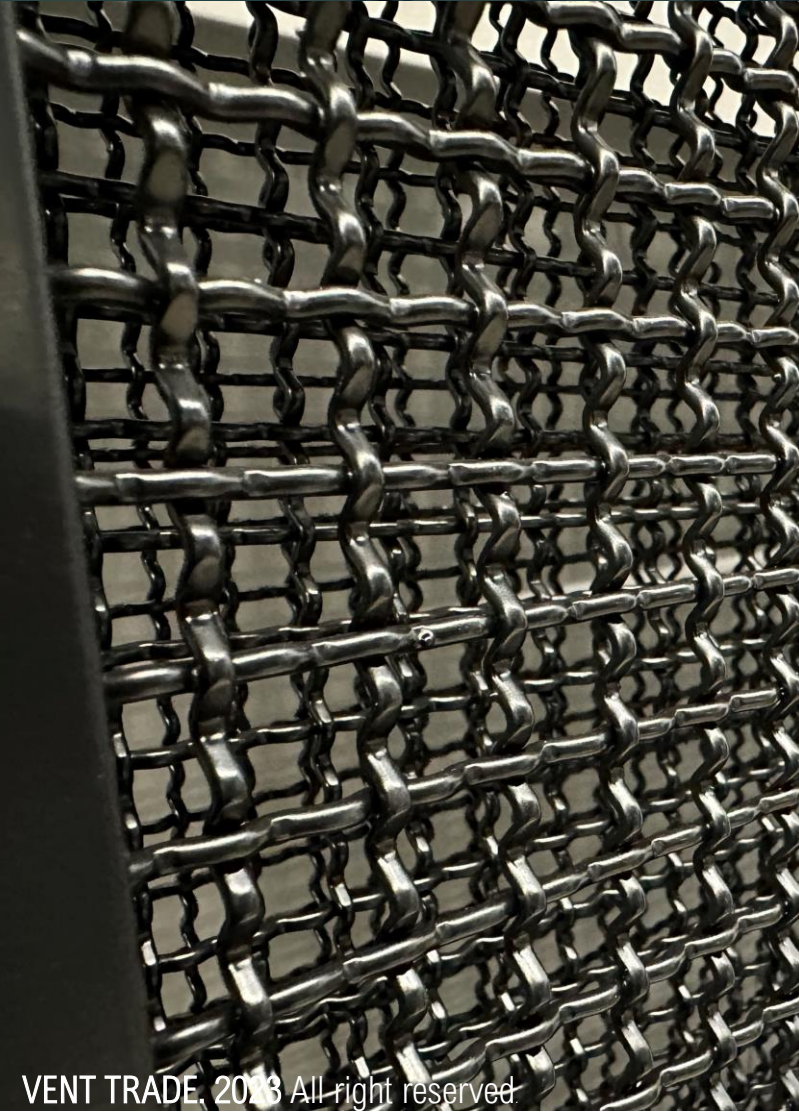


The products are then secured,
packed and prepared for
delivery to our clients.

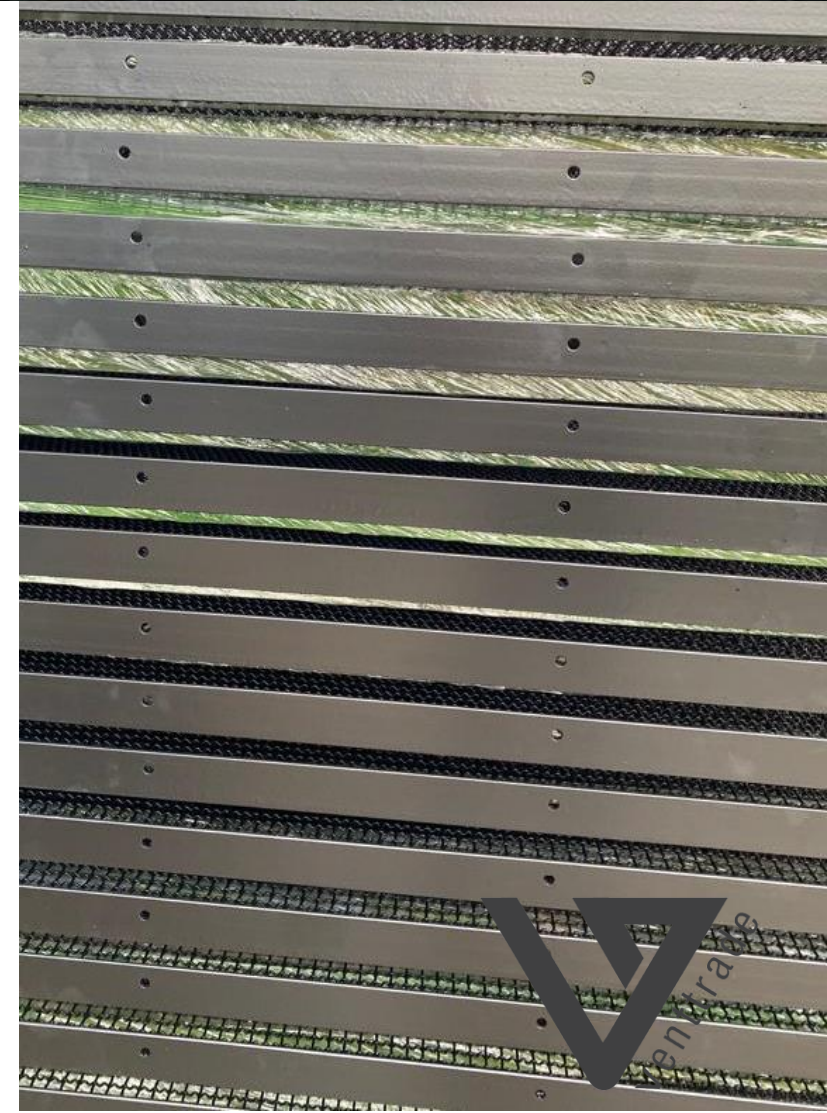
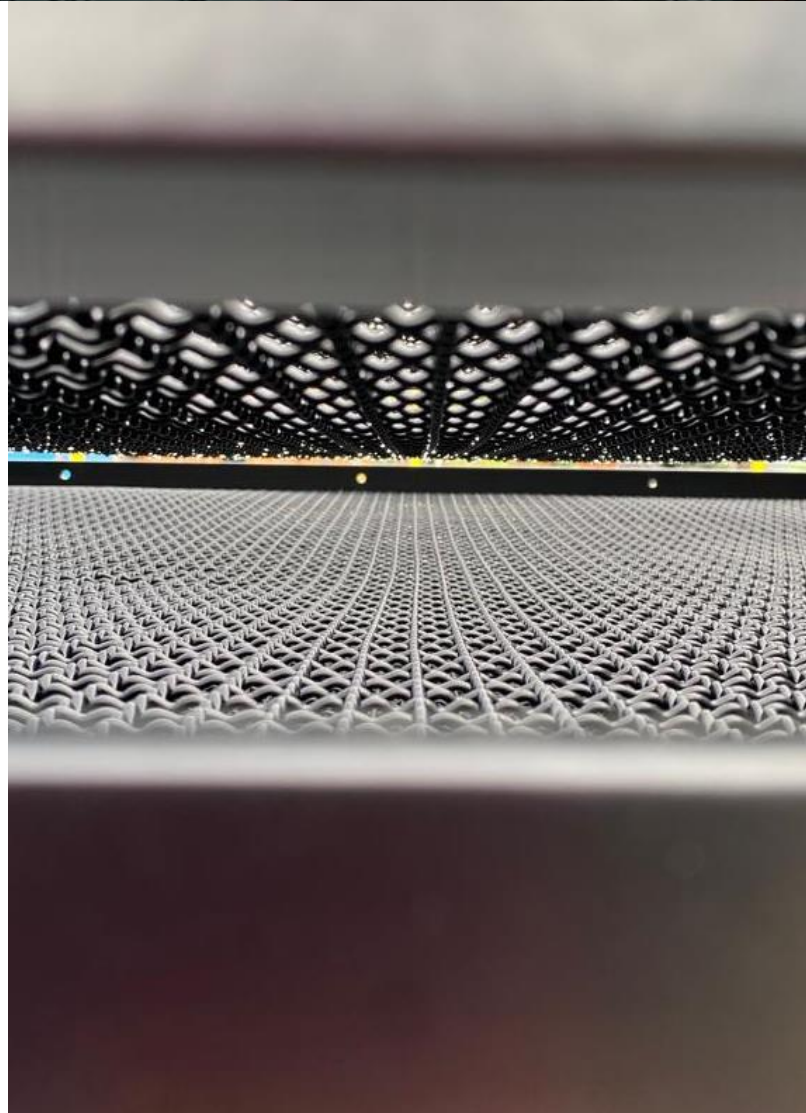
LET US
DO IT
FOR YOU!

From Design to Installation | 2023

Safety Mesh for Data Centers |



VENT TRADE, 2023 All right reserved



LET US
DO IT
FOR YOU!

From Design to Installation | 2023

Safety Mesh for Data Centers |

Finally, the finished Mesh
Panels are mounted at location.

